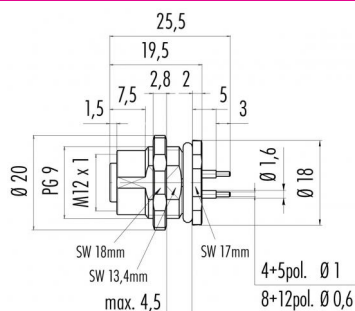


Product description	<b>M12-B female panel mount connector, Contacts: 5, not shielded, dip-solder, IP68, UL, PG9, front mounting</b>
Area	<b>M12-B series 766</b>
Order number	<b>86 0534 1000 00005</b>

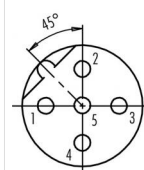
### Illustration



### Scale drawing



### Contact arrangement (Plug-in side)



	X	Y
1	-2,50	0,00
2	0,00	2,50
3	2,50	0,00
4	0,00	-2,50
5	0,00	0,00

- 1 brown
- 2 white
- 3 blue
- 4 black
- 5 grey

You can find the assembly instructions on the next page.

## Technical data

### General values

#### Notice

Please note that, due to the change from the old to the new order number, there may be deviations in the technical specifications. For questions about product details, please use the 'Contact Customer Service' form on the right.

Connector design  
Connector locking system  
Termination  
Upper limit temperature  
Lower limit temperature  
Customs tariff number  
Packaging Unit

female panel mount connector  
screw  
dip-solder  
85 °C  
- 40 °C  
85369010  
20

### Cable data

Approval 1

UL

### Electrical values

Rated current (40 °C) 4 A  
Rated voltage 60 V  
Rated impulse voltage 1500 V  
Pollution degree 3  
Overvoltage category II  
Insulating material group II  
Insulation resistance > 10<sup>8</sup> Ω  
EMC compliance not shielded  
Degree of protection IP68  
Mechanical operation > 100 Mating cycles  
Contact length 6.0 mm

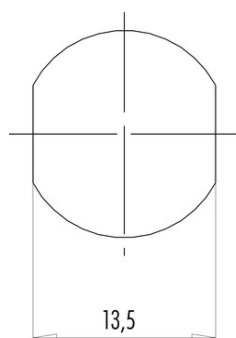
### Material

Contact plating Au (gold)  
Contact body material PA  
Housing material Zinc die-cast nickel-plated  
REACH SVHC CAS 7439-92-1 (Lead)

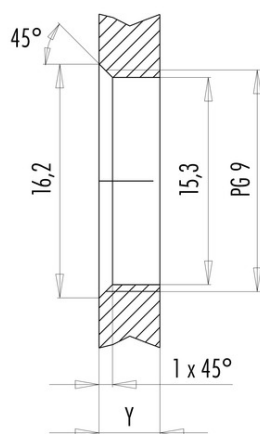
Product description	<b>M12-B female panel mount connector, Contacts: 5, not shielded, dip-solder, IP68, UL, PG9, front mounting</b>
Area	<b>M12-B series 766</b>
Order number	<b>86 0534 1000 00005</b>

### Assembly instructions / Panel cut-out

Mit Fläche als Verdrehenschutz



Mit Durchgangsbohrung



Einbaurichtung: O-Ring sitzt an Fase.

Anzugsdrehmoment

Metallgehäuse	6,25 Nm
Positioniermutter	6,25 Nm

Gehäusewandstärke Y (mm)		
Ausführung	min (mm)	max (mm)
Hinterwandmontage	2	3,5
von vorne verschraubbar	2	4,5
positionierbar <sup>1)</sup>	2	3,5
Schraubklemmanschluss	2	3,5
Gewinde M12 x 1	2	3,0
Gewinde M14 x 1 <sup>2)</sup>	<sup>3)</sup> 1,5/ <sup>4)</sup> 2	6,5

Hinweise

- <sup>1)</sup> Keine Fase anbringen
- <sup>2)</sup> Wandstärken:  
bis 1,5 mm Kontermutter 01-5385 verwenden,  
>1,5 mm Gewinde schneiden
- <sup>3)</sup> Mutter
- <sup>4)</sup> Gewinde in Gehäusewand

Product description	<b>M12-B female panel mount connector, Contacts: 5, not shielded, dip-solder, IP68, UL, PG9, front mounting</b>
Area	<b>M12-B series 766</b>
Order number	<b>86 0534 1000 00005</b>

## Security notices

The connectors are designed for use in plant, control system and electrical equipment. The end user is responsible for checking whether the connectors are suitable for use in other applications.

Connectors with degree of protection IP 67 and IP 68 are not suitable for use under water. When used outdoors, the connectors must be separately protected against corrosion. For further information about IP degrees of protection refer to 'Technical support' in the Download Centre.